

LIDAR Accuracy Assessment Report - Edgecombe County

Edgecombe

The preliminary checkpoint spreadsheets were received from NCGS on June 14, 2001. Two spreadsheets were included for each county, which compared the independent QAQC survey checkpoints with the interpolated LIDAR "Z" value as provided by the contractors. The spreadsheet summaries included:

1. All the checkpoints with the RMSE calculation for combined land cover
2. 95% of the checkpoints with the RMSE calculation (5% of points having the largest error removed)

All data was reviewed and further analyzed to assess the quality of the data. The review process examined the statistics for the combined land cover and the trends for each specific land cover type. The following graphs and figures illustrate the data quality as per the RMSE criteria.

Table 1 summarizes the RMSE using:

- 100% of the checkpoints
- 95% of the checkpoints
- Checkpoints categorized by land cover type

Table 1. RMSE by Land Class				
%	RMSE (cm)	# of Points	Land Class	RMSE Criteria (cm)
100	32.6	136	All	
95	17.4	129	All	25
17	12.3	24	Grass	
19	19.5	26	Weeds/Crop	
15	18.1	20	Scrub	
30	17.9	41	Forest	
13	18.2	18	Built-up	

The LIDAR data for Edgecombe County meets the specification as per the RMSE criteria of 25 cm.

All figures represent the data with the 95% data set. The data is of good quality and easily meets specifications.

Figure 1 illustrates the RMSE by specific land cover class.

LIDAR Accuracy Assessment Report - Edgecombe County

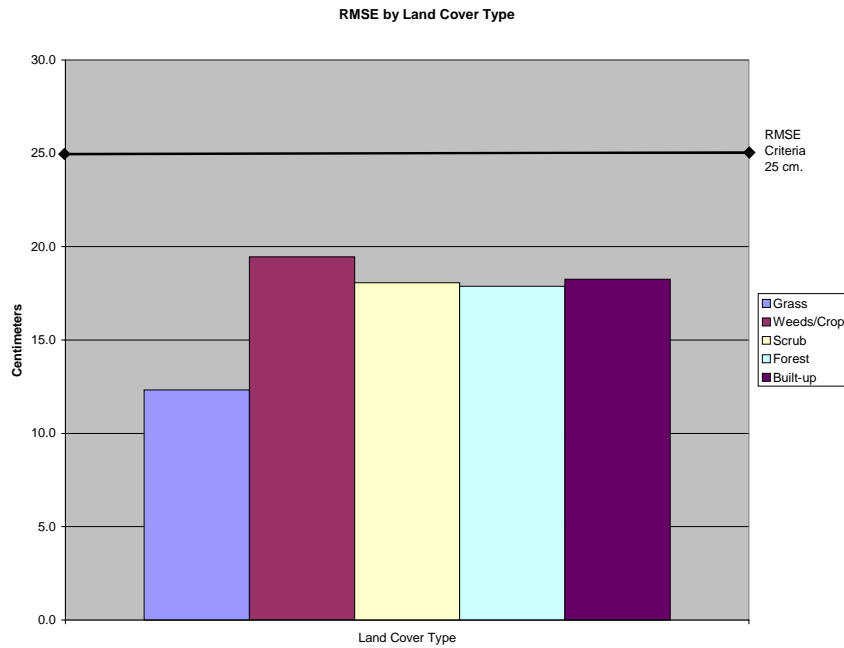


Figure 1

Figure 2 illustrates the magnitude of the differences between the checkpoints and LIDAR data by specific land class type and sorted from lowest to highest.

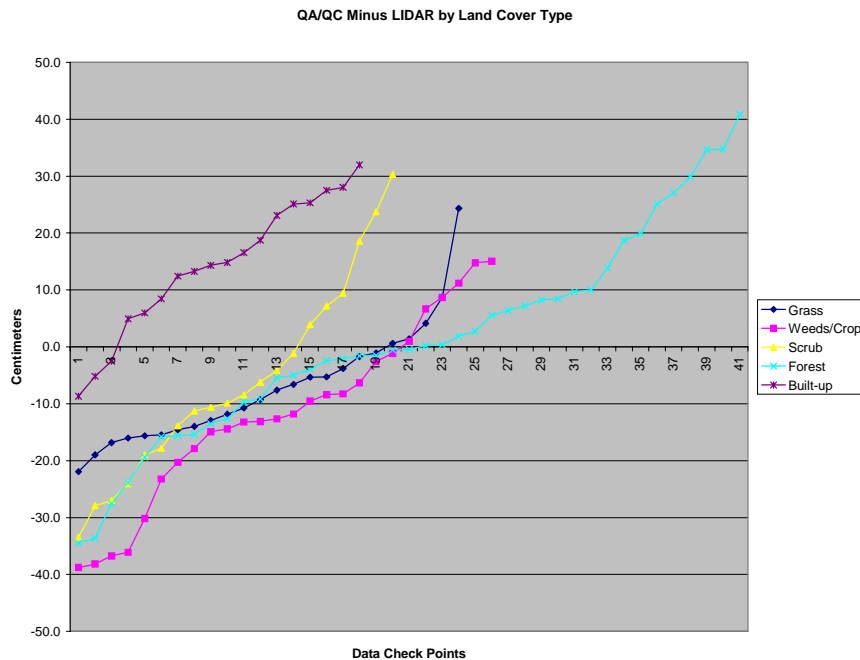


Figure 2

LIDAR Accuracy Assessment Report - Edgecombe County

Table 2 illustrates the Delta between the QAOC survey checkpoints and that of the interpolated LIDAR.

Table 2. Elevation Delta					
Delta (cm)	Land Cover				
-21.9	Grass	-2.6	Weeds/Crop	-2.1	Forests
-19.0	Grass	-1.1	Weeds/Crop	-1.6	Forests
-16.8	Grass	1.0	Weeds/Crop	-1.5	Forests
-16.0	Grass	6.7	Weeds/Crop	-0.6	Forests
-15.6	Grass	8.7	Weeds/Crop	-0.4	Forests
-15.5	Grass	11.2	Weeds/Crop	0.2	Forests
-14.5	Grass	14.8	Weeds/Crop	0.4	Forests
-14.0	Grass	15.0	Weeds/Crop	1.9	Forests
-12.9	Grass	-33.5	Scrub	2.8	Forests
-11.8	Grass	-27.9	Scrub	5.5	Forests
-10.7	Grass	-27.0	Scrub	6.4	Forests
-9.3	Grass	-24.0	Scrub	7.2	Forests
-7.6	Grass	-19.0	Scrub	8.2	Forests
-6.6	Grass	-17.8	Scrub	8.4	Forests
-5.3	Grass	-13.9	Scrub	9.7	Forests
-5.3	Grass	-11.3	Scrub	10.0	Forests
-3.8	Grass	-10.6	Scrub	13.9	Forests
-1.7	Grass	-9.9	Scrub	18.7	Forests
-1.1	Grass	-8.4	Scrub	19.8	Forests
0.6	Grass	-6.2	Scrub	25.1	Forests
1.4	Grass	-4.2	Scrub	27.1	Forests
4.1	Grass	-1.1	Scrub	29.8	Forests
8.8	Grass	3.9	Scrub	34.7	Forests
24.3	Grass	7.2	Scrub	34.8	Forests
-38.8	Weeds/Crop	9.4	Scrub	40.9	Forests
-38.2	Weeds/Crop	18.6	Scrub	-8.7	Built-up
-36.8	Weeds/Crop	23.7	Scrub	-5.2	Built-up
-36.1	Weeds/Crop	30.3	Scrub	-2.5	Built-up
-30.2	Weeds/Crop	-34.5	Forests	4.9	Built-up
-23.2	Weeds/Crop	-33.6	Forests	6.0	Built-up
-20.3	Weeds/Crop	-27.6	Forests	8.4	Built-up
-17.9	Weeds/Crop	-23.8	Forests	12.4	Built-up
-14.9	Weeds/Crop	-19.4	Forests	13.3	Built-up
-14.4	Weeds/Crop	-15.8	Forests	14.3	Built-up
-13.2	Weeds/Crop	-15.6	Forests	14.8	Built-up
-13.1	Weeds/Crop	-15.4	Forests	16.6	Built-up
-12.7	Weeds/Crop	-13.5	Forests	18.7	Built-up
-11.8	Weeds/Crop	-12.6	Forests	23.1	Built-up
-9.6	Weeds/Crop	-9.7	Forests	25.1	Built-up
-8.4	Weeds/Crop	-9.1	Forests	25.3	Built-up
-8.3	Weeds/Crop	-5.5	Forests	27.5	Built-up
-6.3	Weeds/Crop	-5.0	Forests	28.0	Built-up
		-3.9	Forests	32.0	Built-up
		-2.4	Forests		

LIDAR Accuracy Assessment Report - Edgecombe County

Table 3 illustrates the overall statistics for the checkpoint data.

Table 3. Overall Descriptive Statistics								
	RMSE (cm)	Mean (cm)	Median (cm)	Skew	Std Dev	# of Points	Min (cm)	Max (cm)
Total	17.4	-2.2	-3.8	0.20	17.34	129	-38.8	40.9
Grass	12.3	-7.1	-8.4	1.27	10.29	24	-21.9	24.3
Weeds/Crop	19.5	-11.6	-12.2	-0.12	15.96	26	-38.8	15.0
Scrub	18.1	-6.1	-9.2	0.51	17.46	20	-33.5	30.3
Forest	17.9	1.3	-0.4	0.21	18.05	41	-34.5	40.9
Built-up	18.2	14.1	14.6	-0.43	11.89	18	-8.7	32.0