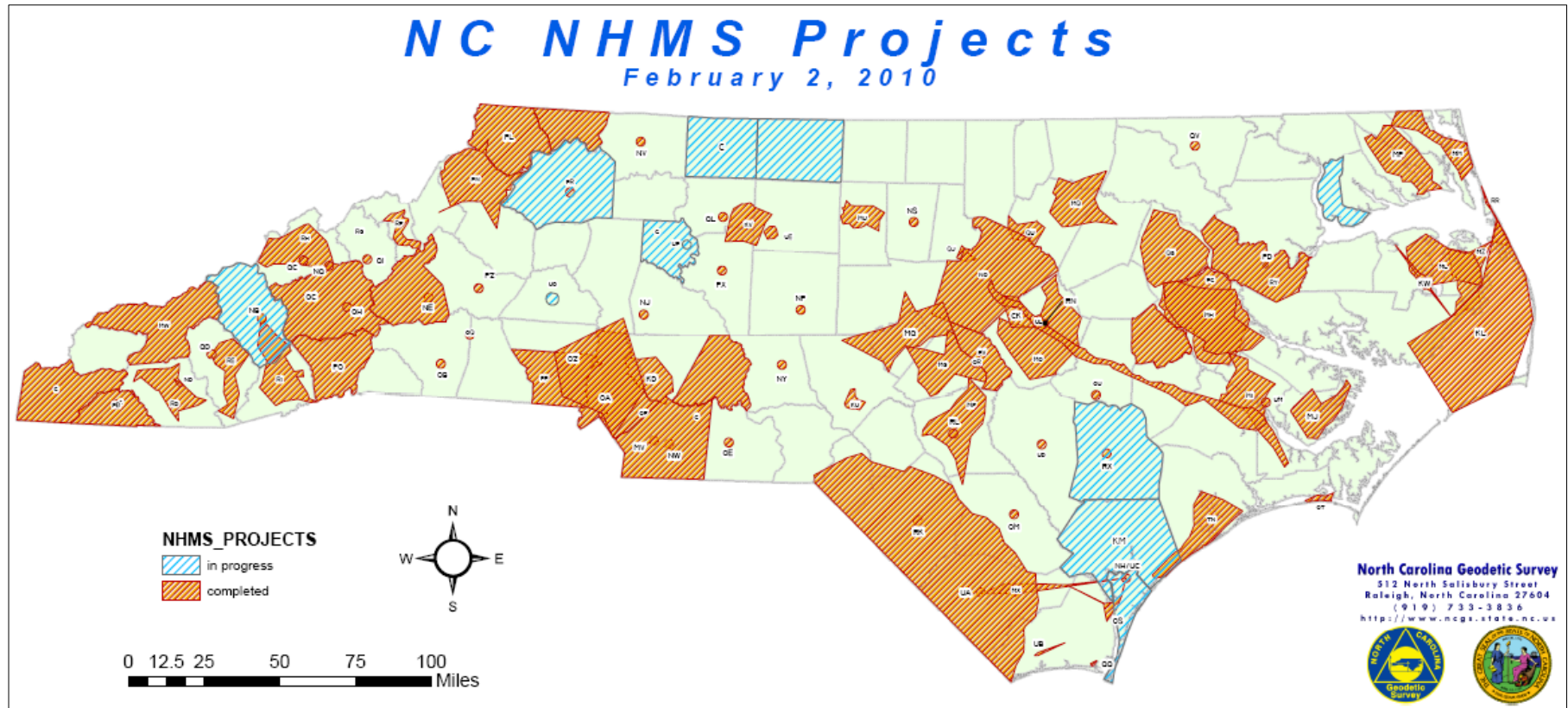


NCGS Height Modernization activities for August 2010



HM projects in progress (please see the higher resolution status map on the next page)

- Observations completed in Burke County
- Project site reconnaissance is in progress in Pender, Stokes, and Wilkes counties.
- Data processing in progress for a project in Burke County.
- Final project processing completed in Davie County. The project will be submitted in early September to NGS for inclusion into the National Spatial Reference System.

CORS

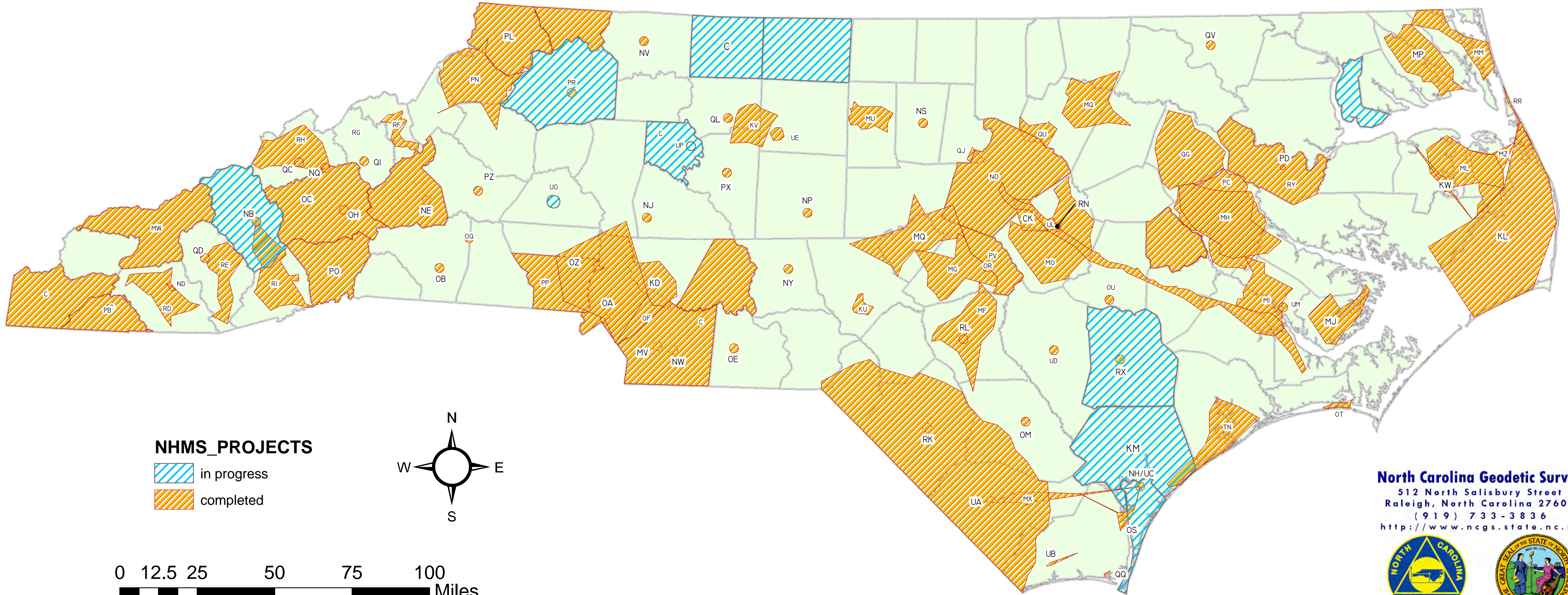
- Site installation completed:
 - Elizabeth City
 - Fort Fisher
 - Gatesville
 - Kinston
 - Reidsville
 - Robbinsville
 - Rockingham
 - Roxboro
 - Warrenton
- CORS upgrade to a GNSS receiver and antenna completed at the following sites:
 - Asheboro Zoo (NCZO)
 - Burlington (NCBU)
 - Carthage (NCCA)
 - Concord (NCCO)
 - Duck (NCDU)
 - I-77 (NC77)
 - Jackson (NCJA)
 - Lexington (NCLE)
 - Lillington (NCLI)
 - Lumberton (NCLU)
 - Mooresville (NCMO)
 - Pea Island (NCPI)

Educational outreach

- A Height Modernization regional meeting was held on July 22, 2010.
- A Height Modernization presentation was given at Wayne Community College on July 21, 2010.

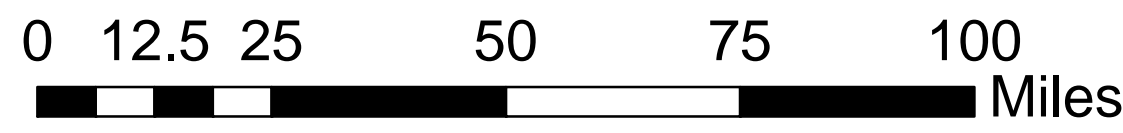
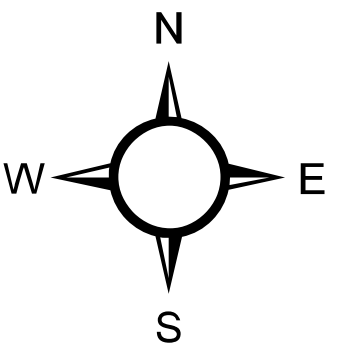
NC NHMS Projects

February 2, 2010



NHMS_PROJECTS

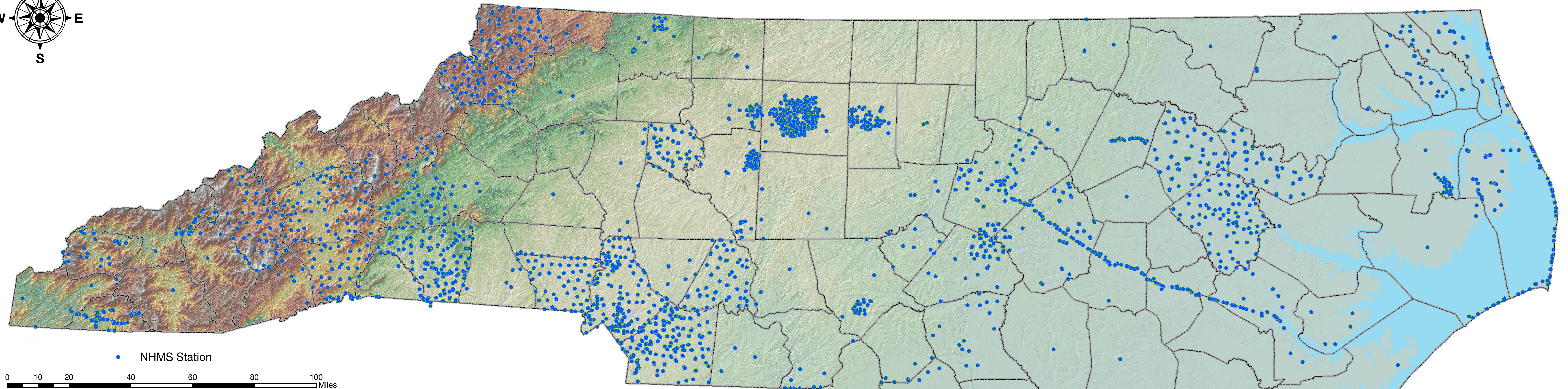
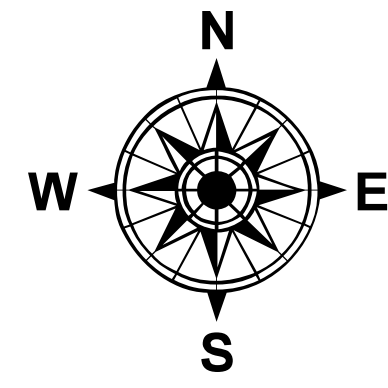
- in progress
- completed



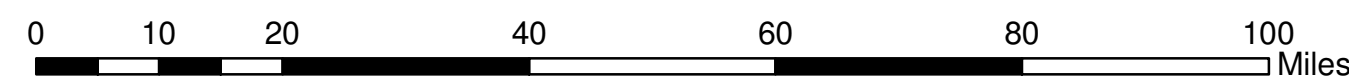
North Carolina Geodetic Survey
512 North Salisbury Street
Raleigh, North Carolina 27604
(919) 733-3836
<http://www.ncgs.state.nc.us>



National Height Modernization System Projects in North Carolina



• NHMS Station



Education Outreach

Height Modernization Workshops: is a traveling workshop designed for government agencies, professional surveyors, academic departments, school groups, and other interested parties in North Carolina.

- Workshops are tailored to each group's respective needs
- PDH credit



Tidal Station Surveys

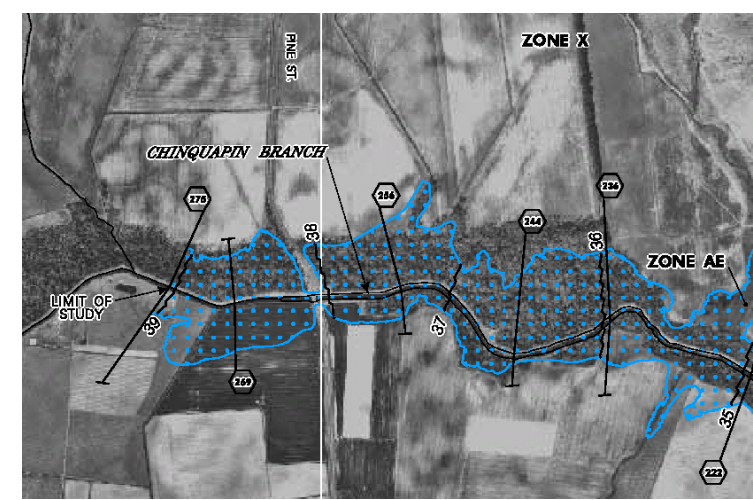


Tidal station

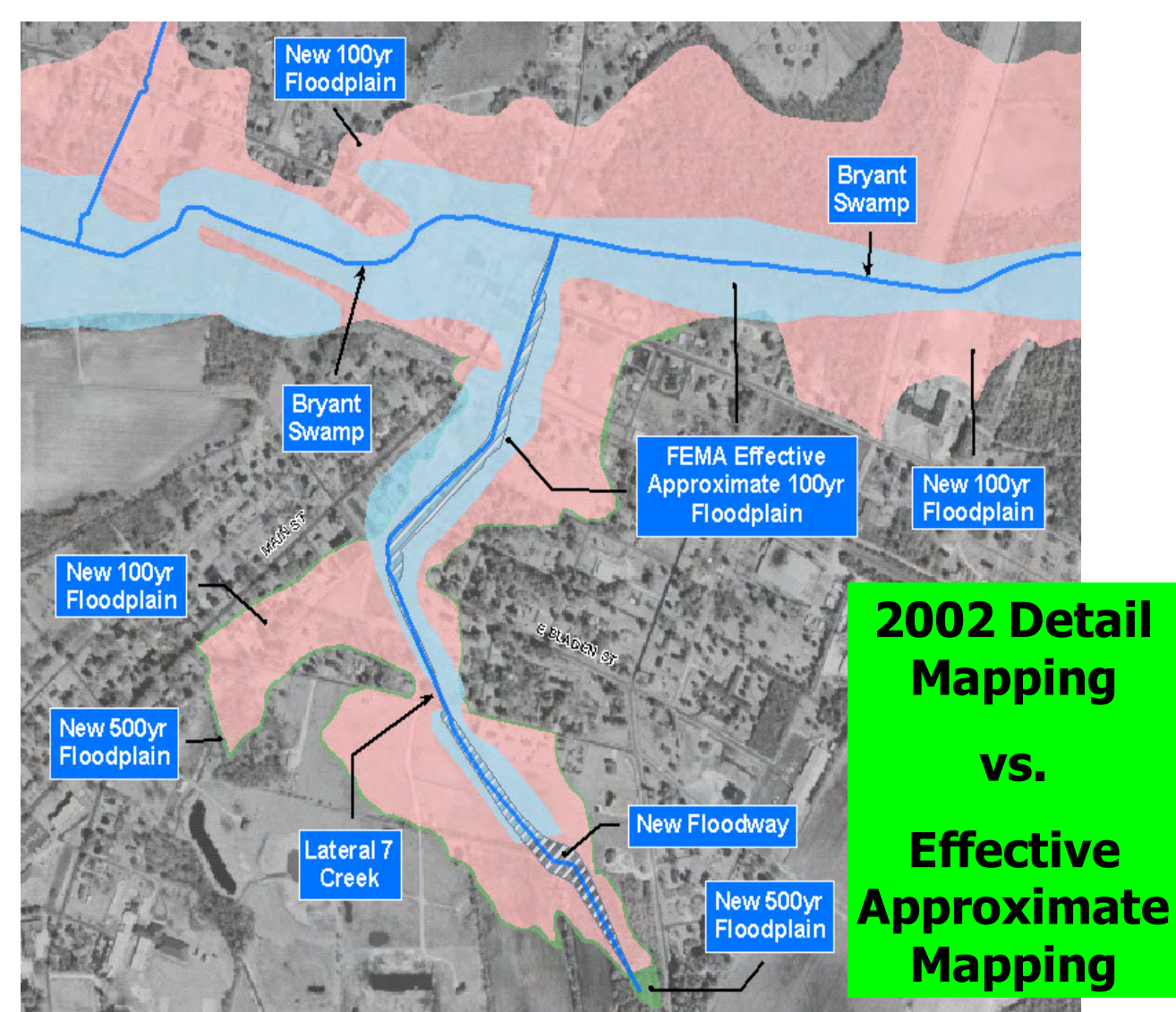
NCNHMS Project

GPS and traditional leveling will be used to connect tidal stations to the vertical control network

Jones County 2003 Mapping

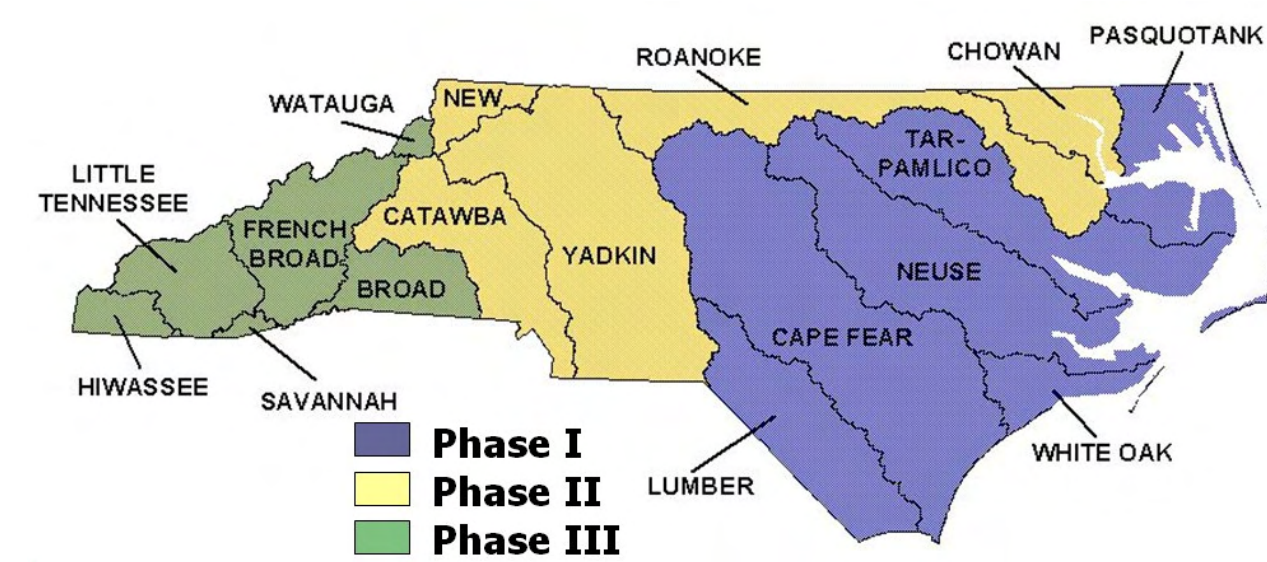


Floodplain Mapping

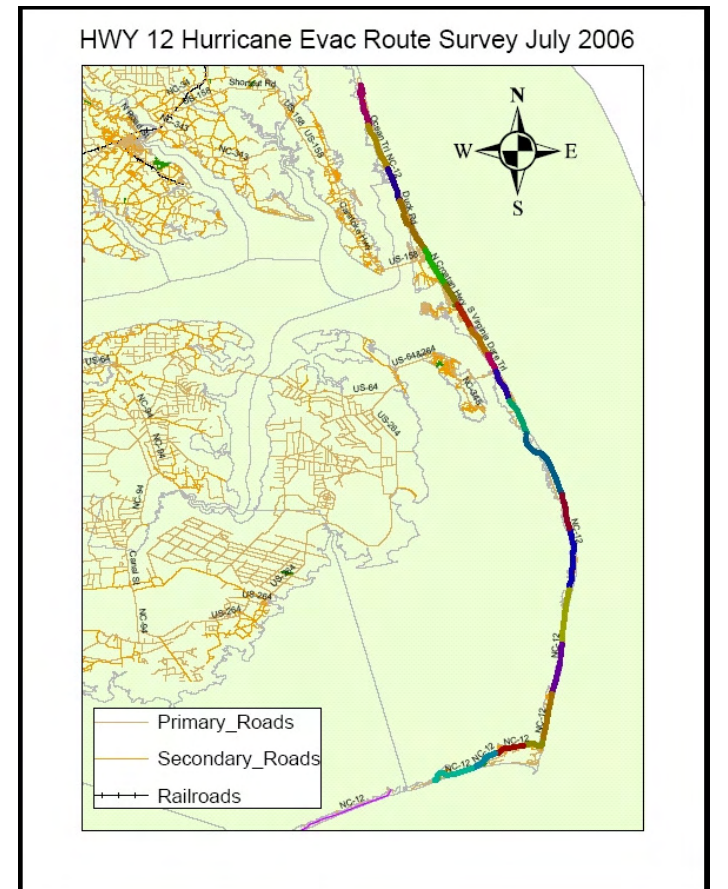


2002 Detail Mapping vs. Effective Approximate Mapping

North Carolina Floodplain Mapping Program

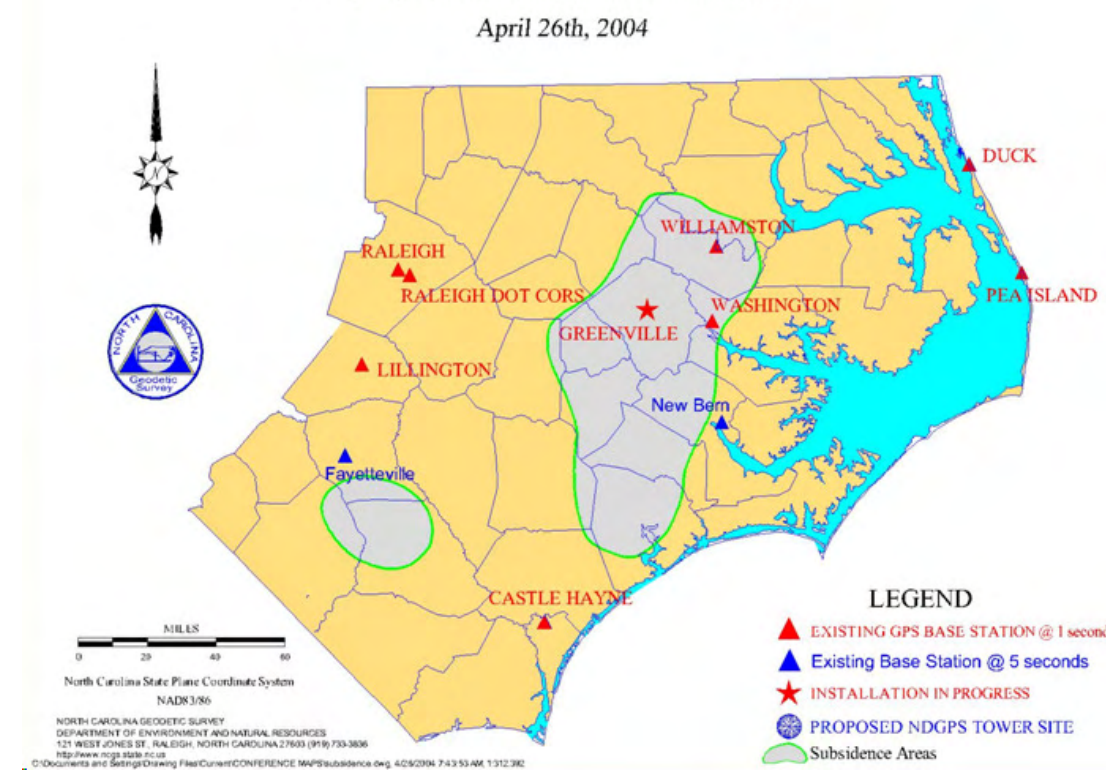


Mapping Evacuation Routes

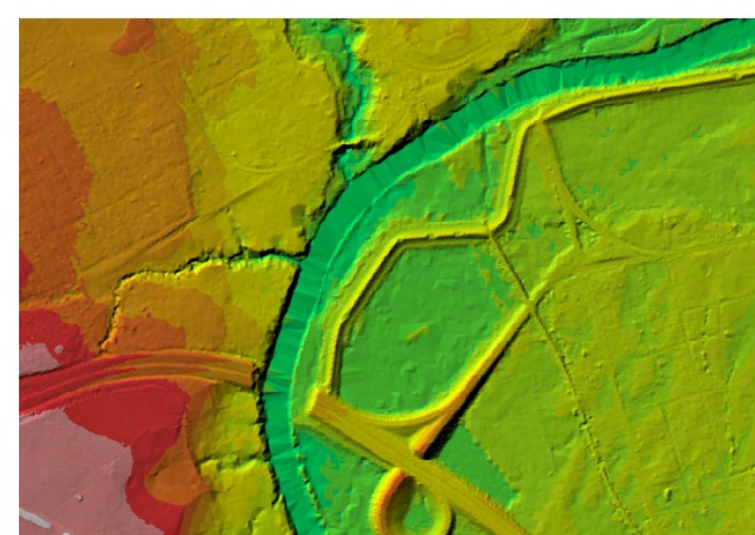


Monitoring Subsidence

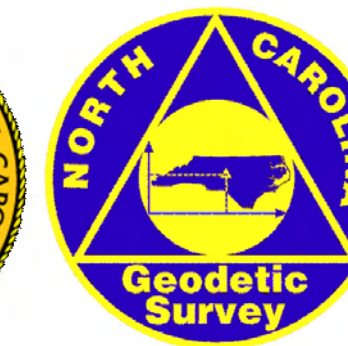
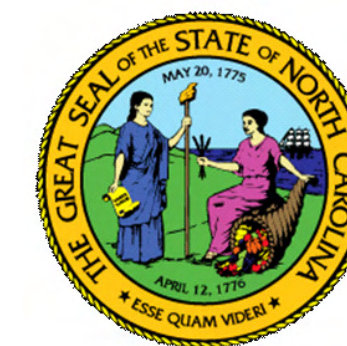
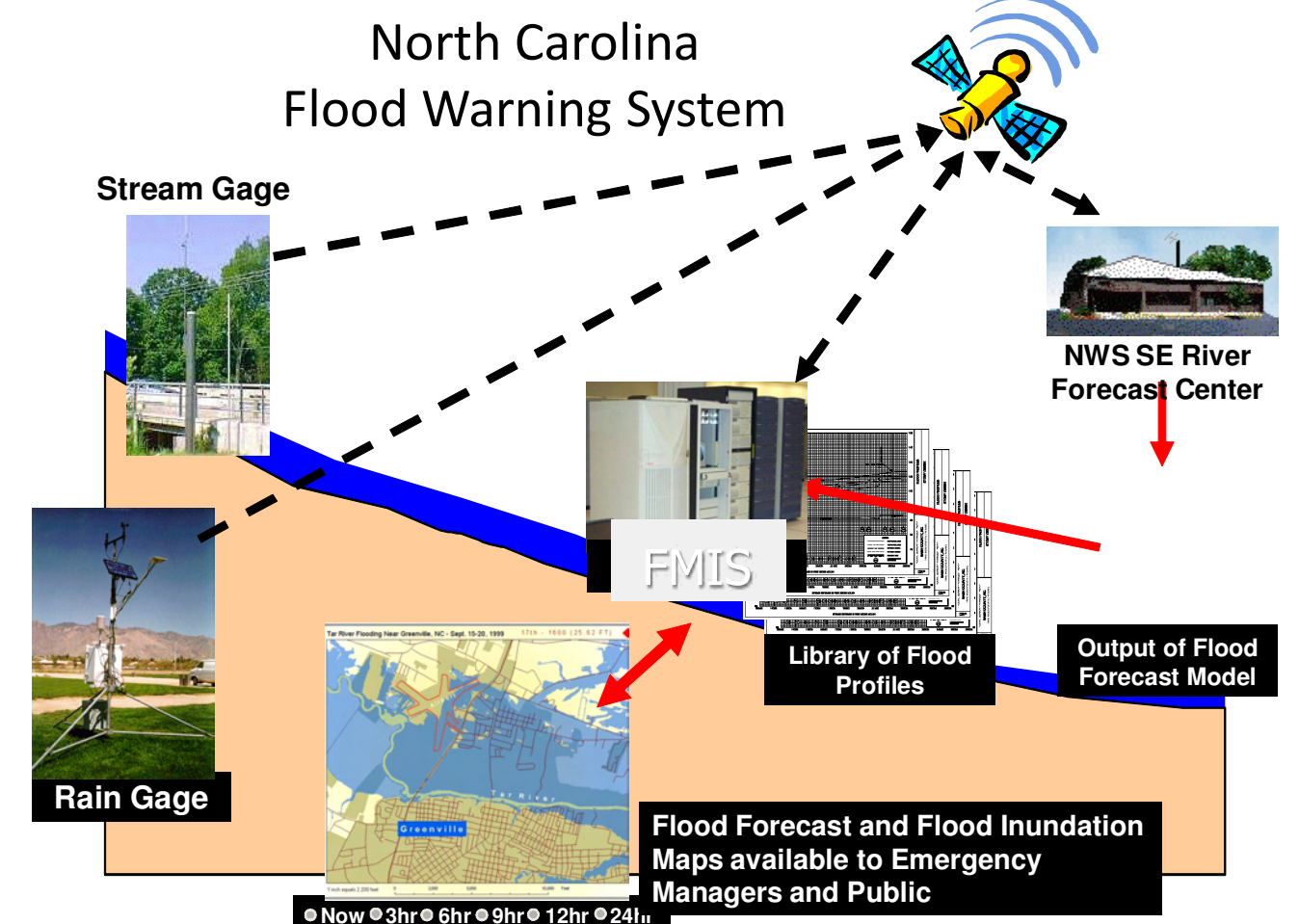
NC Subsidence Areas



LIDAR Digital Elevation Model



Sample Bare Earth DEM (Tarboro, NC)



Map prepared by:
Steve Kaufman
North Carolina Geodetic Survey
In conjunction with:
NOAA, NCDOT and NCFMP