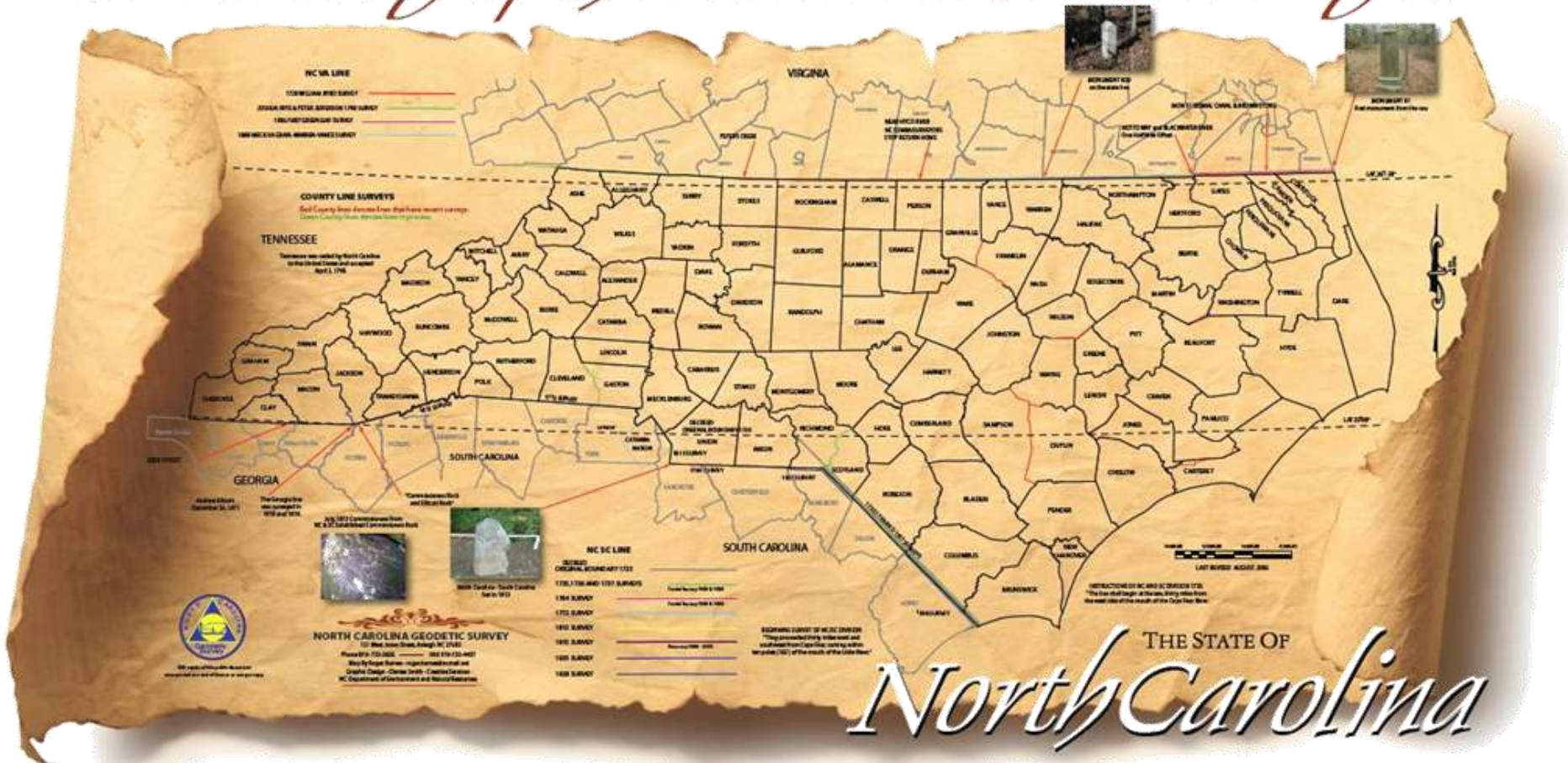
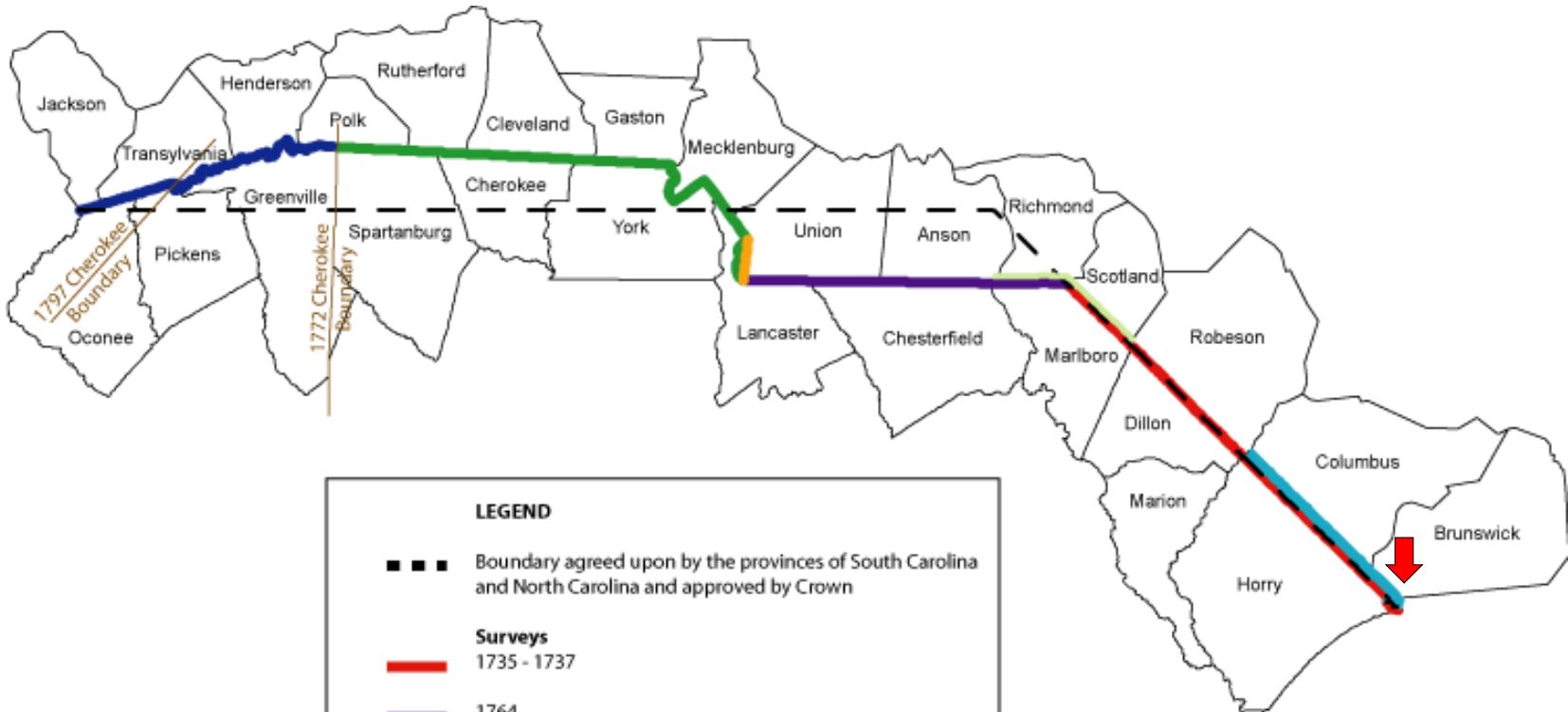


How did North Carolina get its shape?

A History of the Boundaries Surveyed



How did North Carolina get its shape?



The line shall:

1. Begin at the sea, 30 miles from the west side of the mouth of the Cape Fear River
2. From thence, it shall run on a northwest course to 35° N latitude
3. From thence due west to the South Seas

How did North Carolina get its shape?

- **North Carolina/South Carolina boundary**

- **1815 survey**

- Proceeded from the terminus of the 1772 survey

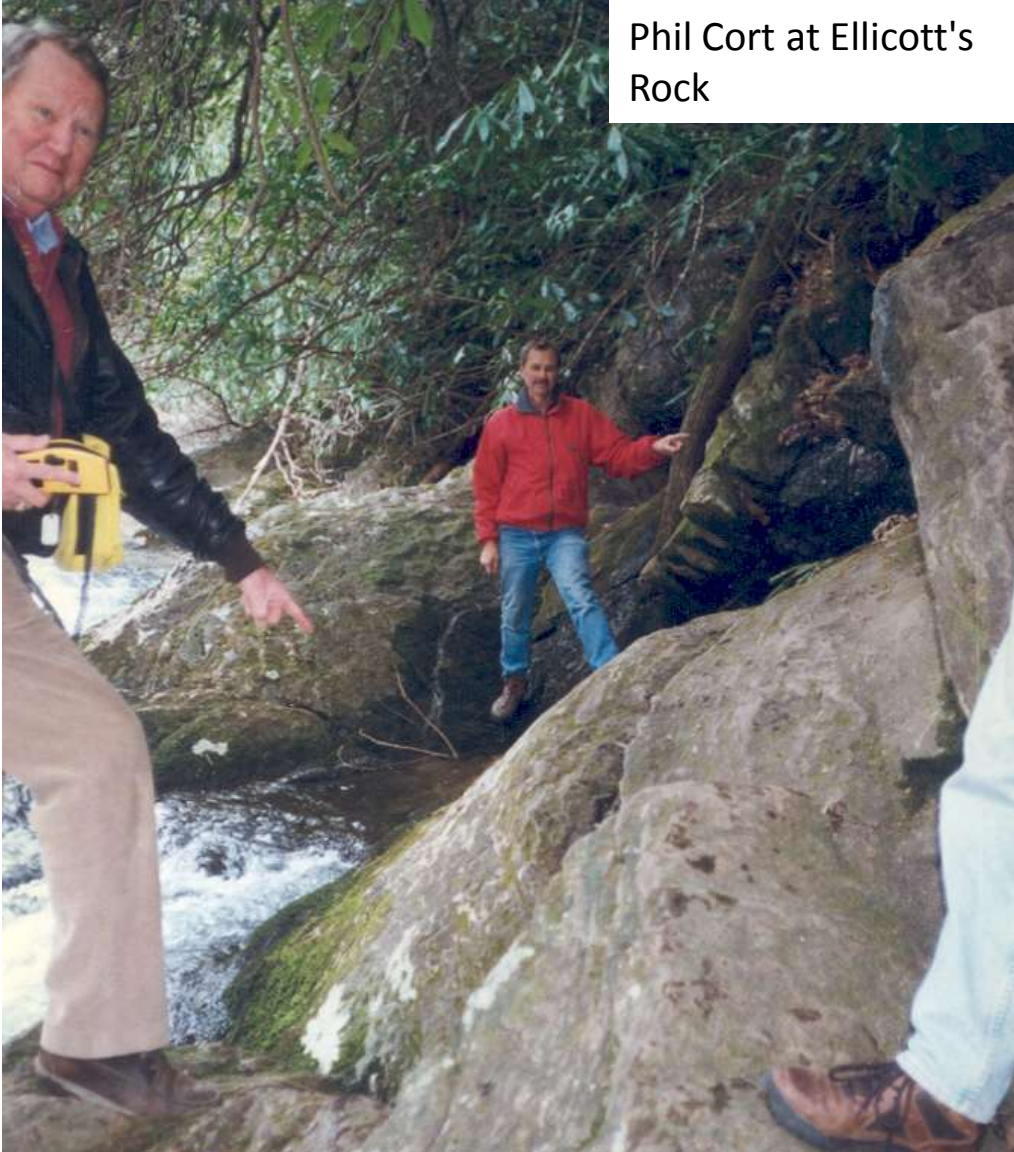


- Along a ridgeline separating two watersheds
- West-southwest to “Commissioners Rock”, which is a rock outcrop on the east bank of the Chattooga River that the NC & SC boundary commissioners had inscribed thinking that it was on the 35th parallel

Although Commissioners Rock is 493 ft north of the 35th parallel, it defines a tri-state/quad-county corner:

- **North Carolina:** Henderson and Transylvania counties
- **South Carolina:** Oconee County
- **Georgia:** Rabun County

Phil Cort at Ellicott's
Rock



Sid Miller at Commissioner's
Rock





Ellicott's Rock?



Alex at the NC/SC stones

S C .

A . D . 1815

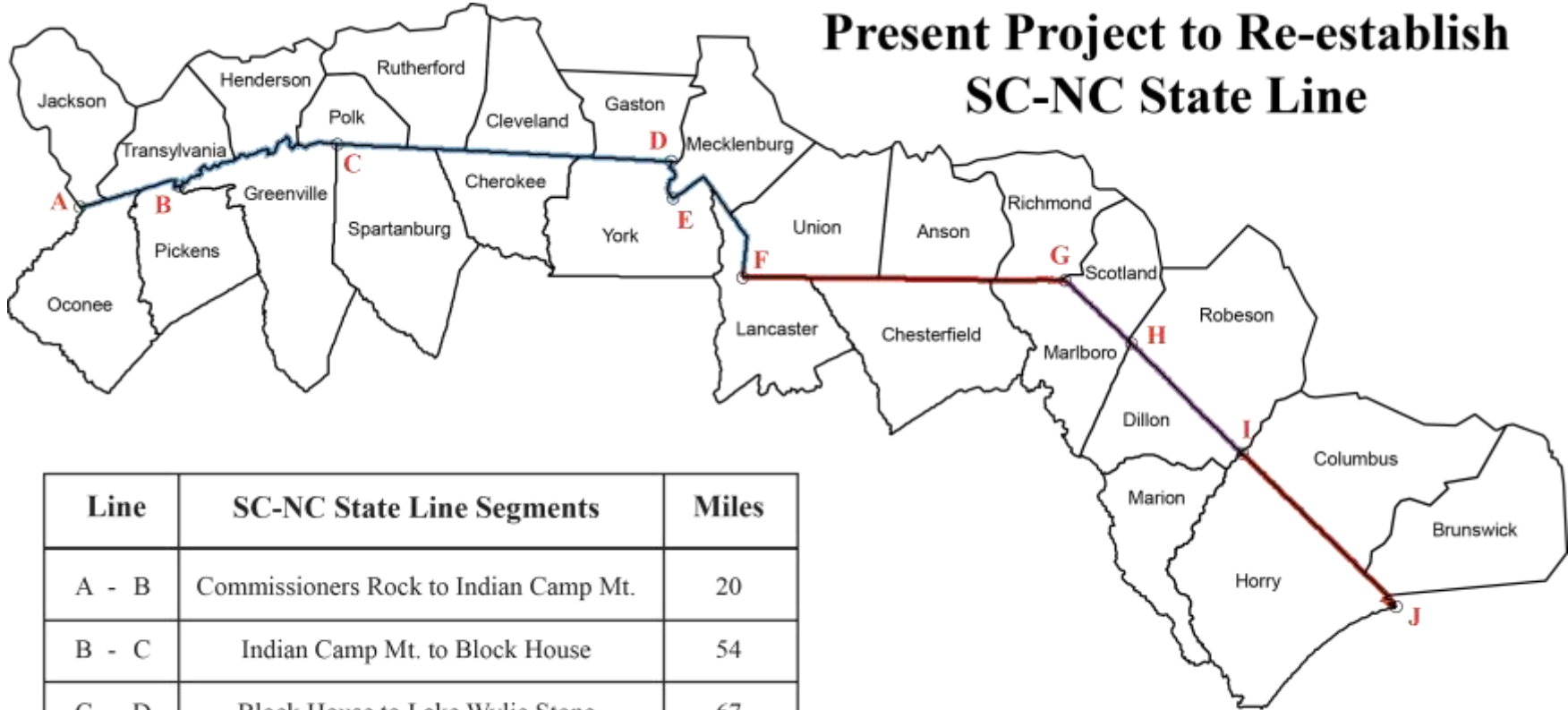
SC rock

A large, flat, grey rock is the central focus of the image. The letters 'N' and 'C' are written on the rock in a white, hand-painted style. The rock is surrounded by a thick layer of brown, dried leaves and pine needles. To the left, a dark, textured tree trunk is visible. The background shows more of the forest floor with green plants and tree trunks.

NC

NC rock

Present Project to Re-establish SC-NC State Line



Line	SC-NC State Line Segments	Miles
A - B	Commissioners Rock to Indian Camp Mt.	20
B - C	Indian Camp Mt. to Block House	54
C - D	Block House to Lake Wylie Stone	67
D - E	Center Line of Old Catawba River Bed	8
E - F	Lake Wylie to North Corner	30
F - G	North Corner to 1905 Marlboro County Break Point Monument	64
G - H	Marlboro County SE - NW Line	18
H - I	Dillon County Line	31
I - J	Horry County Line	42

Total 334 miles

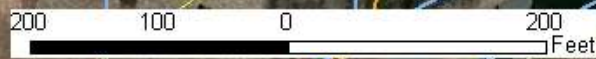
1/23/2012 Status

- Re-established boundary approved by the NC-SC Joint Boundary Commission 179 miles
- Research and field work completed - not yet approved by the NC-SC Joint Boundary Commission 106 miles
- Field work in progress 49 miles

MECKLENBURG

33

York



- SC Parcel Line
- NC Parcel Line
- NC/SC State Line





GASTON

YORK

1

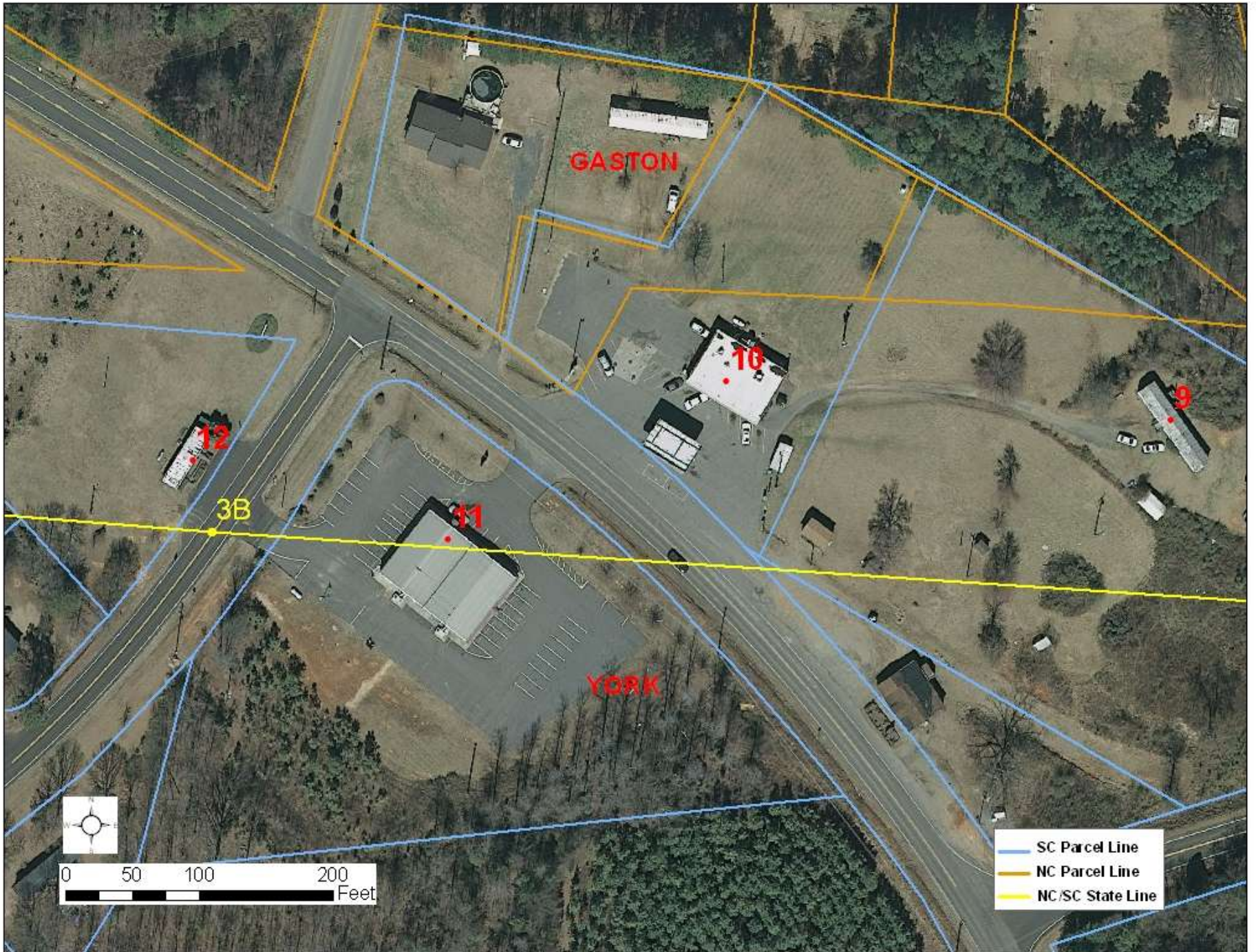
3

2



0 50 100 200 300 Feet

- SC Parcel Line
- NC Parcel Line
- NC/SC State Line



GASTON

YORK

12

10

11

9

3B



0 50 100 200 Feet

- SC Parcel Line
- NC Parcel Line
- NC/SC State Line

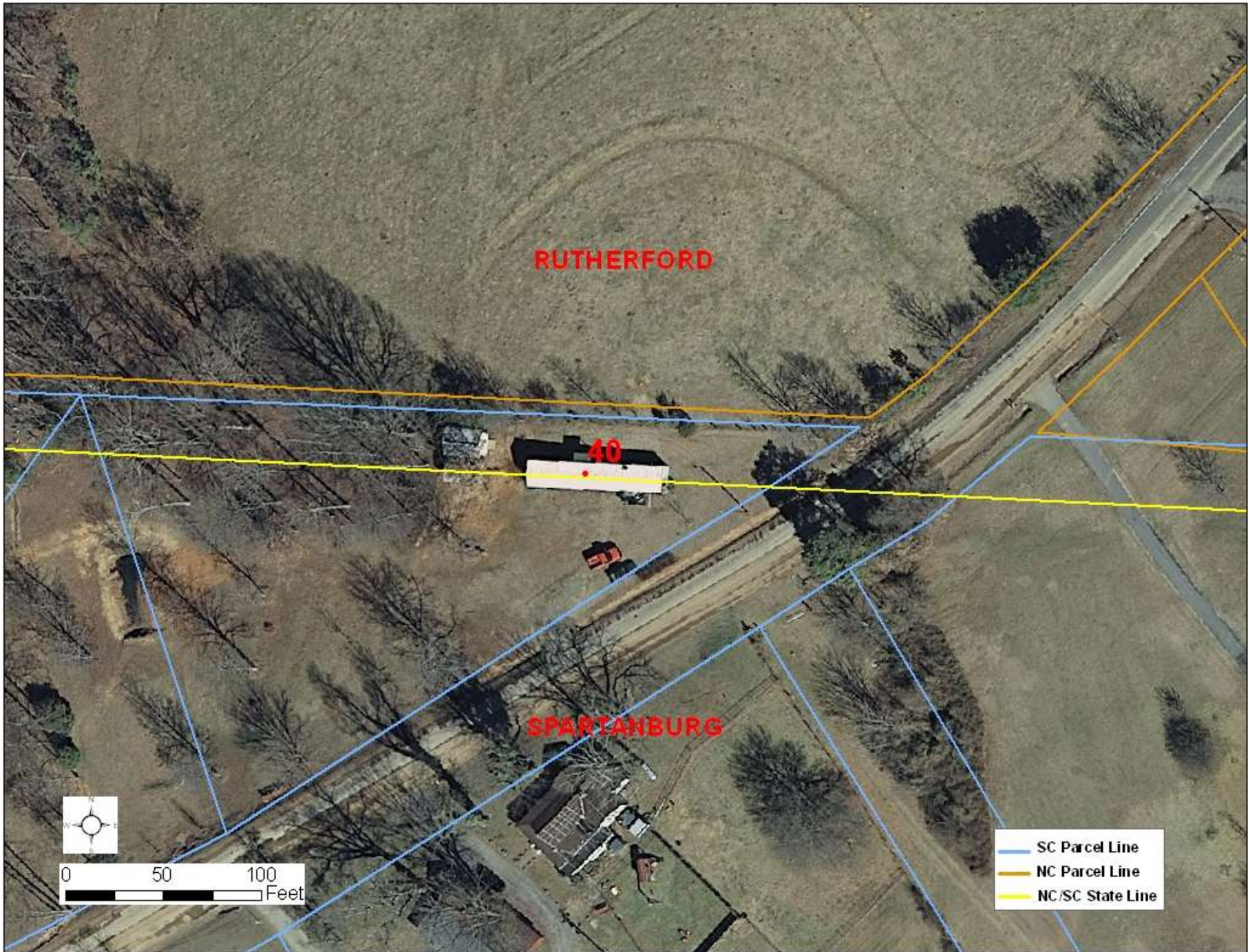
RUTHERFORD

40

SPARTANBURG

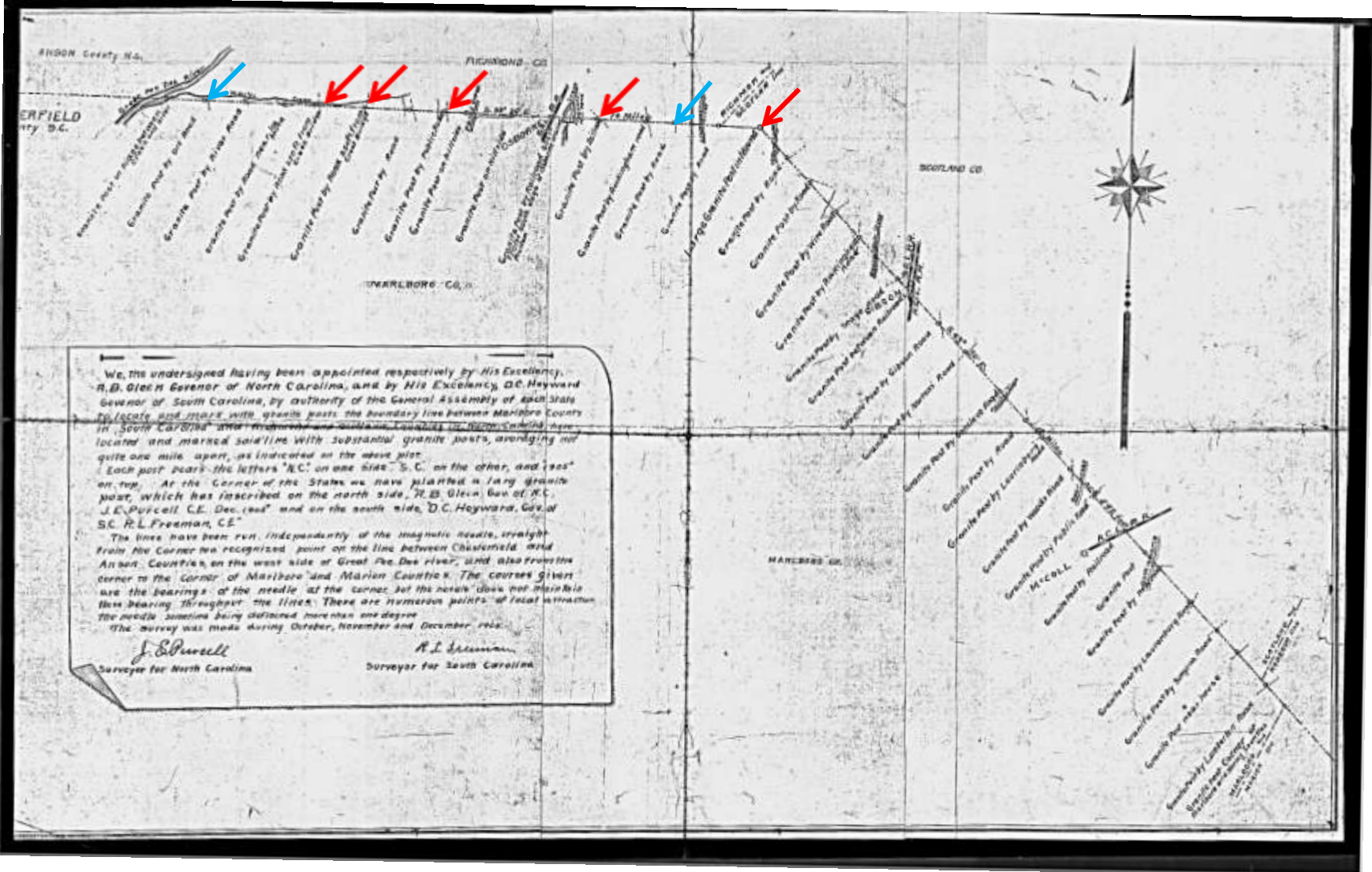


- SC Parcel Line
- NC Parcel Line
- NC/SC State Line



↖ Recovered monument

↗ Monument location calculated from property records



MONUMENT AT BEND OF MARLBORO COUNTY, SC



BOUNDARY MONUMENT PLEASANT NC SC





Mile 2 Monument



Mile 6 Monument

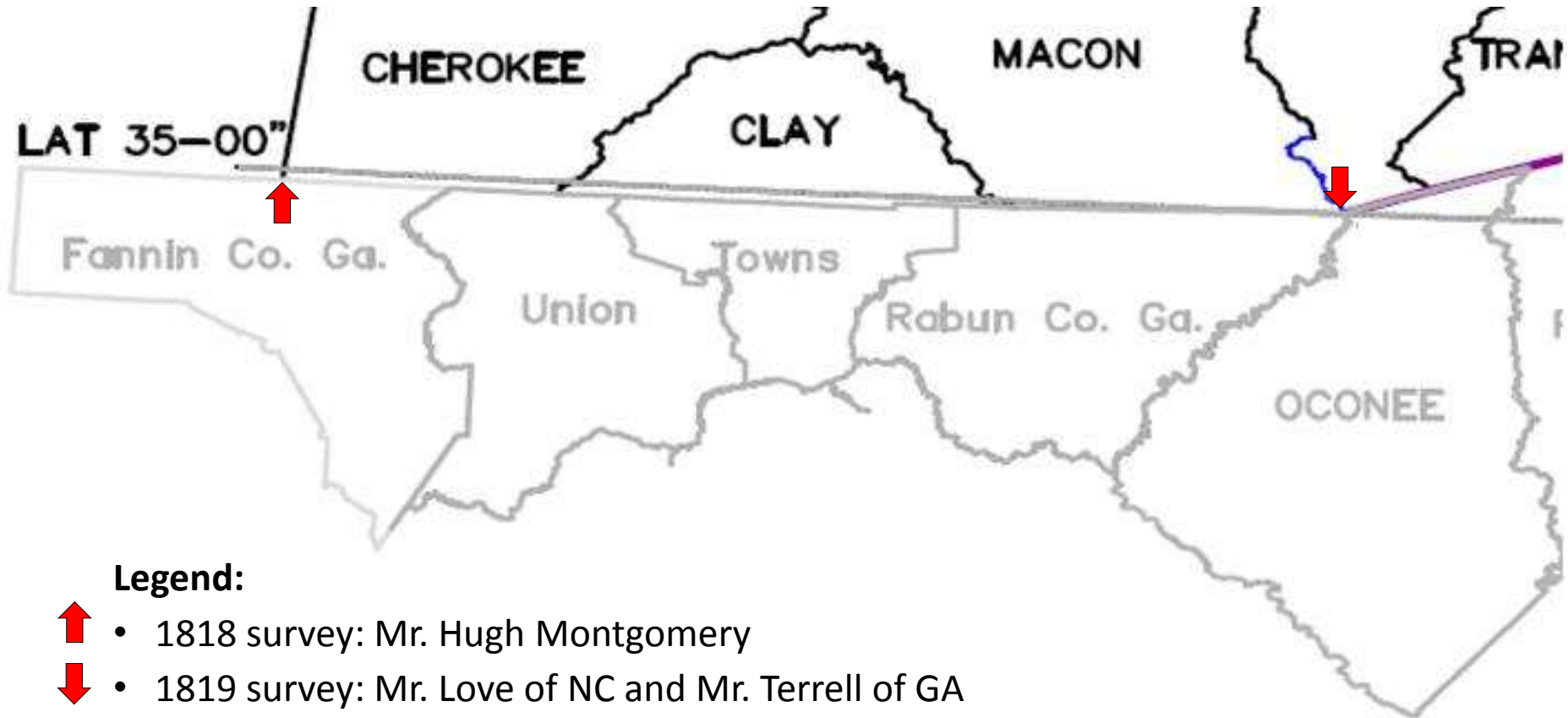


**Mile 6 Monument
Reset at Original
Location**

How did North Carolina get its shape?

- **North Carolina/Georgia boundary** (a line defined by 2 survey teams that didn't meet)
 - **1818 survey led by Mr. Hugh Montgomery**
 - Proceeded east from Georgia's NW corner for 40 miles along what he thought was the 35th parallel until a point near Pine Knob where he set the "Montgomery's Corner" monument, but was 4,813 ft south of the 35th parallel
 - **1819 survey led by Mr. Love of North Carolina and Mr. Terrell of Georgia**
 - Proceeded west from the terminus of the 1815 survey (i.e. Commissioners Rock) for 30 miles where they set the 30 mile stone, which was 1,983 ft north of Montgomery's Corner.

How did North Carolina get its shape?



Round Top Mt ▲

Pine Knob ▲

35th parallel

Monument set by Love & Terrell

Montgomery's Corner

Hightower Bald



Imagery Date: Jun 18, 2008

34°59'31.02" N 83°37'10.79" W elev 3524 ft

© 2011 Google

©2010 Google

Eye alt





NC-GA reference mark



NC-GA



SEP 2
1819
N X G

How did North Carolina get its shape?

- **North Carolina/Tennessee boundary**
 - NC ceded her western territory to the US in 1789
 - 1799 survey led by McDowell, Matthews, & Vance of NC
 - Began at the terminus of the NC-VA survey of 1749
 - Follows the ridge lines of 3 different mountain chains
 - Changes from one mountain ridge to the other by straight lines along Avery, Yancey, & Haywood counties.
 - Although the original intent of this line was to run along these ridgelines to the 35th latitude, the surveying team came off the ridge line for some unknown reason at a point boarding present-day Cherokee County and then proceeded south to the Georgia line. Perhaps, they were following the former border of that Indian nation.

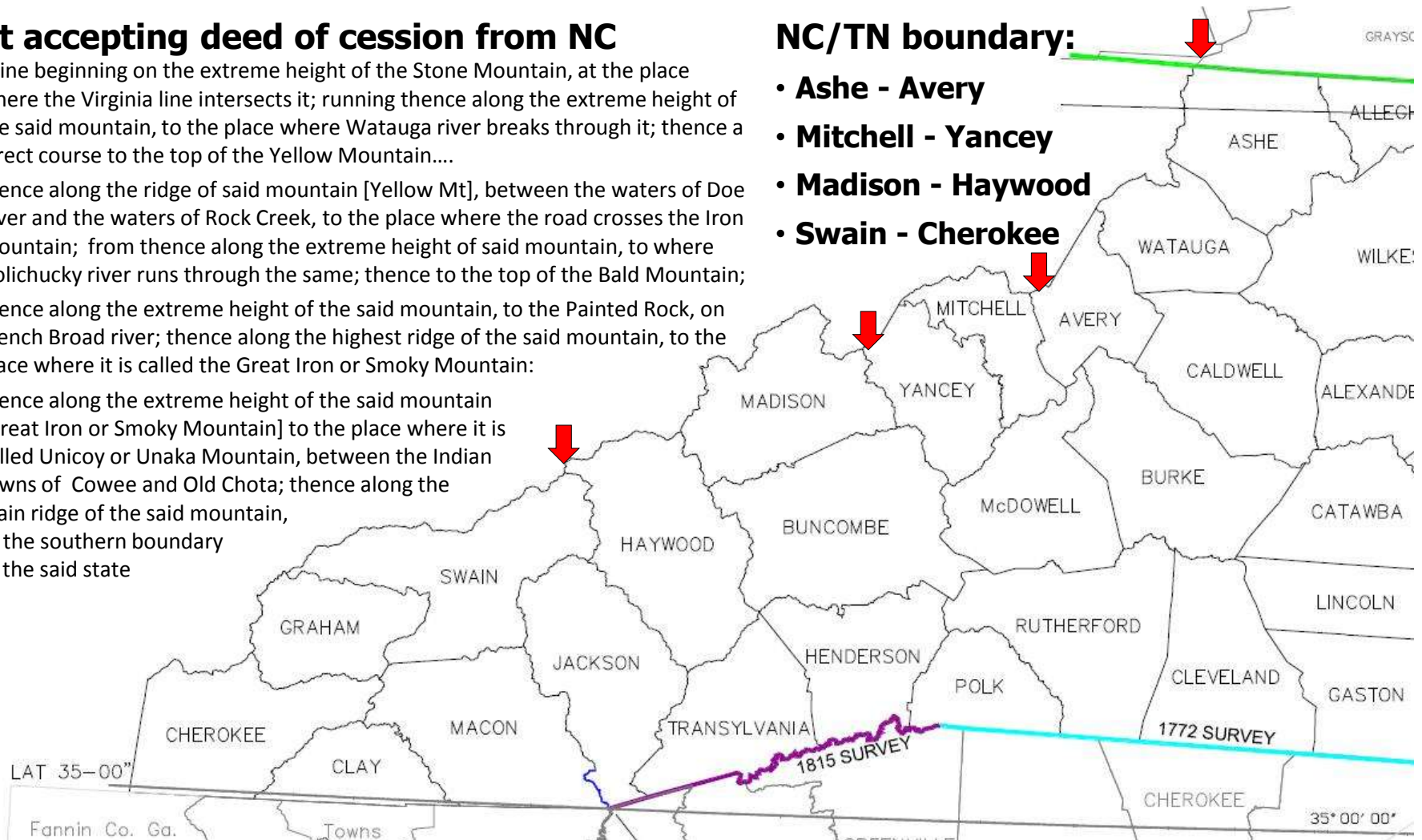
How did North Carolina get its shape?

Act accepting deed of cession from NC

- ...line beginning on the extreme height of the Stone Mountain, at the place where the Virginia line intersects it; running thence along the extreme height of the said mountain, to the place where Watauga river breaks through it; thence a direct course to the top of the Yellow Mountain....
- thence along the ridge of said mountain [Yellow Mt], between the waters of Doe River and the waters of Rock Creek, to the place where the road crosses the Iron Mountain; from thence along the extreme height of said mountain, to where Nolichucky river runs through the same; thence to the top of the Bald Mountain;
- thence along the extreme height of the said mountain, to the Painted Rock, on French Broad river; thence along the highest ridge of the said mountain, to the place where it is called the Great Iron or Smoky Mountain:
- thence along the extreme height of the said mountain [Great Iron or Smoky Mountain] to the place where it is called Unicoy or Unaka Mountain, between the Indian towns of Cowee and Old Chota; thence along the main ridge of the said mountain, to the southern boundary of the said state

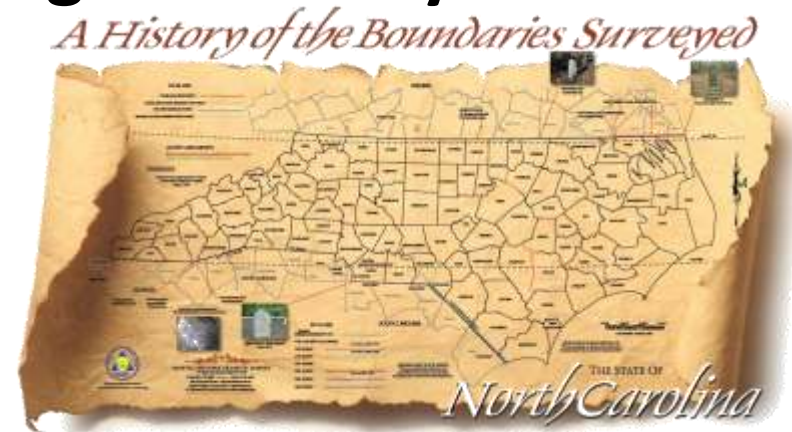
NC/TN boundary:

- **Ashe - Avery**
- **Mitchell - Yancey**
- **Madison - Haywood**
- **Swain - Cherokee**



How did North Carolina get its shape?

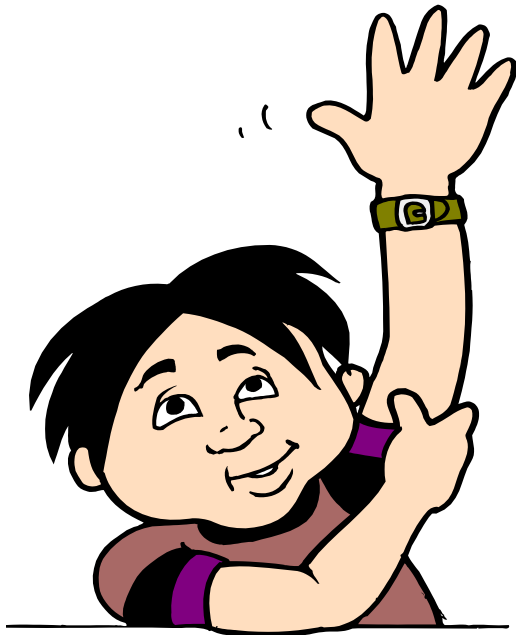
- **Our state's unique shape is a combination of:**
 - Royal charter
 - Adverse field conditions
 - Reasons that may forever be unknown
- **Yet, its beauty comes from being defined by:**
 - Atlantic Ocean
 - Appalachian Mountains
 - Two elusive latitudes



TIMBER TOWERS



Questions?



Gary Thompson, PLS
NC Geodetic Survey
512 North Salisbury Street
Raleigh, NC 27604
919-707-9230 phone
Gary.thompson@ncdenr.gov

